



110 Doon Street Waverley

Realistic Owners Say Sell

Excellent buying in this location, transferred owners have priced the property to sell. A new home for a new year!!

Located in the very desirable suburb of Waverley affording special views over Dunedin harbour, by day and by night, this much loved home is an opportunity not to be missed. A solid brick and tile home that has been well tended to by its owners. There are three generous bedrooms, spacious, open plan, adjoining living areas, perfectly positioned for morning to evening sunshine. Possessing a modern kitchen, this home boasts a near new bathroom with an Italian designed bath and a blissfully powerful, open tiled shower. The living area has a wood-burner backed up by a modern Mitsubishi heat pump. French doors from the lounge open out onto a patio where you can sit back and relax whilst

3  1  1 

FOR SALE
Negotiation

VIEW
Sun 20 Jan 2019
1:00pm to 1:30pm
dunedin.ljhooker.co.nz/1VFEGDS

CONTACT
Geraldine Hermens 027 473 0922

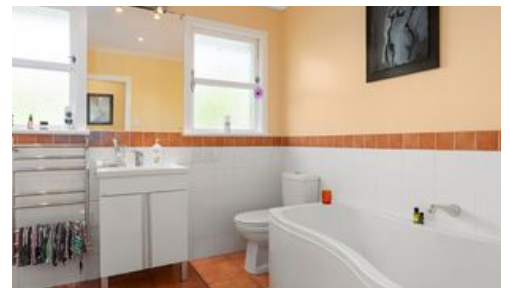
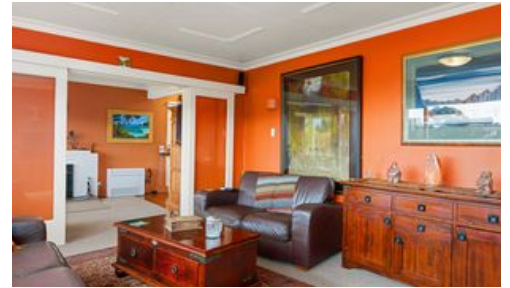
LJ HOOKER DUNEDIN
(03) 470 1370

enjoying harbour views during the long summer nights. The downstairs 3rd bedroom is accessible internally or via its own external entrance. A single garage and extensive basement storage add to the appeal of this property. Potential buyers must view this well loved home to appreciate all that it has on offer.

More About this Property

PROPERTY ID	1VFEGDS
PROPERTY TYPE	Residential
INCLUDING	

Licensed Real Estate Agents (REAA2008)



LJ Hooker Dunedin - Wayne Graham Realty Ltd

CONTACT: Geraldine Hermens
EMAIL: geraldine@ljhdunedin.co.nz
MOBILE: 027 473 0922

PHONE: (03) 470 1370
FAX: (03) 455 0790

DISCLAIMER

The above information has been furnished to us by the Vendor. We have not verified whether or not that information is accurate and do not have any belief one way or the other in its accuracy. We do not accept any responsibility to any person for its accuracy and do no more than pass it on. All interested parties should make and rely upon their own enquiries in order to determine whether or not this information is in fact accurate.