



3  1  1 

2 Challis Street Waverley

Contemporary Home - More Than Meets The Eye

Auction Location: LJ Hooker Office, 63 Musselburgh Rise.

This on trend contemporary 1960's home will impress and surprise. Situated on a corner site in the highly sought after Vauxhall suburb, this north/northwest facing home is bathed in all day sunshine and offers so much more than you see from the street. From nearly every angle of the house there are views onto the private sunny sheltered garden with the open plan kitchen, dining, living area providing access for you to enjoy many an evening BBQ and watch the children play. The master bedroom is very spacious, with a further two double bedrooms also providing excellent storage and featuring internal windows that

FOR SALE

Sold

VIEW

dunedin.ljhooker.co.nz/1VT5GDS

CONTACT

Pam Mulder 027 454 3366

LJ HOOKER DUNEDIN

(03) 470 1370

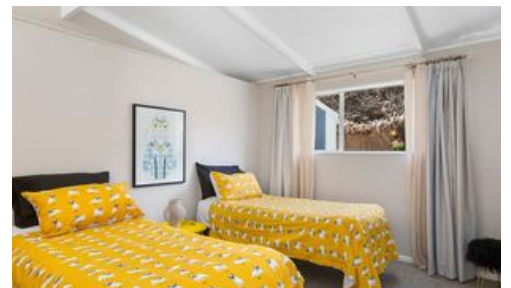
capture sunlight from the big picture windows in the hallway. Upstairs the generous size lounge captures sun and views straight into the harbour basin. Heating of the home is catered for with a heat pump and wood burner. A modern bathroom, separate toilet and laundry wrap up the inside. A carport and off street parking complete the outside. Looking for something special? Do not delay!

An e-info pack including the council LIM report will be available upon request.

More About this Property

PROPERTY ID	1VT5GDS
PROPERTY TYPE	Residential
LAND AREA	526 m ²
INCLUDING	

Licensed Real Estate Agents (REAA2008)



LJ Hooker Dunedin - Wayne Graham Realty Ltd

CONTACT: Pam Mulder
EMAIL: pam@ljhdunedin.co.nz
MOBILE: 027 454 3366

PHONE: (03) 470 1370
FAX: (03) 455 0790

DISCLAIMER

The above information has been furnished to us by the Vendor. We have not verified whether or not that information is accurate and do not have any belief one way or the other in its accuracy. We do not accept any responsibility to any person for its accuracy and do no more than pass it on. All interested parties should make and rely upon their own enquiries in order to determine whether or not this information is in fact accurate.